

Violin I

Arr. Arne Dich

# Sonate 2 da Chiesa

A. Corelli

## 1. Grave

fra Opus 1

3. Adagio

Musical notation for measures 1-8 of '3. Adagio'. The key signature has one flat (B-flat) and the time signature is 3/4. Measure 8 is boxed with the number 8.

Musical notation for measures 9-16 of '3. Adagio'.

Musical notation for measures 17-25 of '3. Adagio'. Measure 17 is boxed with the number 17.

4. Allegro

Musical notation for measures 26-32 of '4. Allegro'. The key signature changes to two flats (B-flat and E-flat) and the time signature is 6/8. Measure 26 is boxed with the number 26. A 'Tutti' marking is present above measure 32.

Musical notation for measures 33-41 of '4. Allegro'.

Musical notation for measures 42-49 of '4. Allegro'. Measure 42 is boxed with the number 12.

Musical notation for measures 50-55 of '4. Allegro'. Measure 50 is boxed with the number 19 and labeled 'Solo A'.

Musical notation for measures 56-62 of '4. Allegro'. Measure 56 is boxed with the number 26. Measure 60 is boxed with the number 32 and labeled 'Solo B'. Dynamics markings 'p' and 'f' are present below measures 60 and 62 respectively.

Musical notation for measures 63-69 of '4. Allegro'.

Musical notation for measures 70-76 of '4. Allegro'. Measure 73 is boxed with the number 40 and labeled 'Tutti'.

Musical notation for measures 77-83 of '4. Allegro'. Measure 80 is boxed with the number 47 and labeled 'Tutti'.

Musical notation for measures 84-90 of '4. Allegro'. Measure 87 is boxed with the number 52. The piece ends with a 'mf' dynamic marking.

Violin II

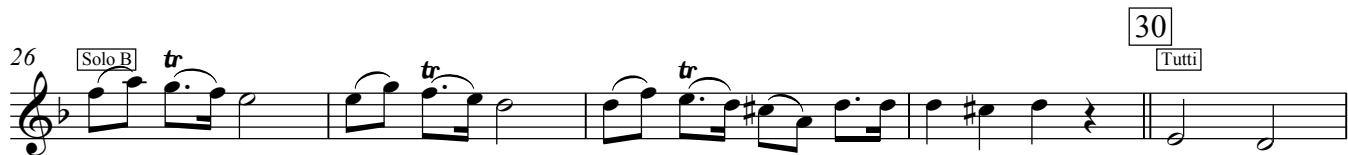
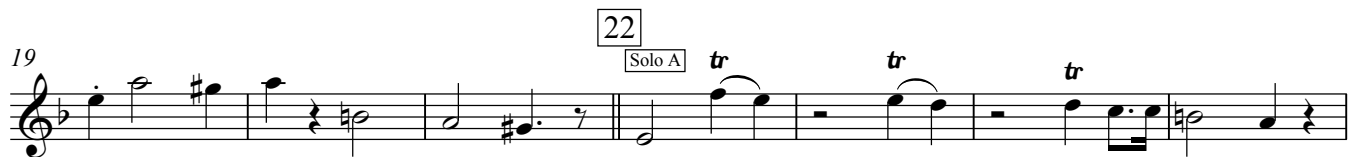
Arr. Arne Dich

# Sonate 2 da Chiesa

A. Corelli

## 1. Grave

fra Opus 1



3. Adagio

Musical notation for measures 1-8 of '3. Adagio'. The key signature has one flat (B-flat) and the time signature is 3/4. Measure 8 is boxed with the number 8.

Musical notation for measures 9-16 of '3. Adagio'.

Musical notation for measures 17-25 of '3. Adagio'. Measure 17 is boxed with the number 17.

4. Allegro

Musical notation for measures 26-25 of '4. Allegro'. The key signature has one flat and the time signature is 6/8. Measure 26 is boxed with the number 26. A 'Tutti' marking is present above measure 27.

Musical notation for measures 4-10 of '4. Allegro'.

Musical notation for measures 11-19 of '4. Allegro'. Measure 12 is boxed with the number 12.

Musical notation for measures 20-24 of '4. Allegro'. Measure 20 is boxed with the number 20. A 'Solo A' marking is present above measure 21.

Musical notation for measures 25-31 of '4. Allegro'. Measure 25 is boxed with the number 25. 'Tutti' and 'Solo A' markings are present above measures 26 and 31 respectively. A 'p' dynamic marking is present below measure 31.

Musical notation for measures 32-39 of '4. Allegro'. Measure 32 is boxed with the number 32. A 'Solo B' marking is present above measure 33. A 'f' dynamic marking is present below measure 33.

Musical notation for measures 40-46 of '4. Allegro'. Measure 43 is boxed with the number 43. A 'Tutti' marking is present above measure 44.

Musical notation for measures 47-52 of '4. Allegro'. Measure 52 is boxed with the number 52.

Musical notation for measures 53-59 of '4. Allegro'. Measure 53 is boxed with the number 53. A 'mf' dynamic marking is present below measure 59.

Viola

Arr. Arne Dich

# Sonate 2 da Chiesa

A. Corelli

## 1. Grave

fra Opus 1

## 2. Vivace

### 3. Adagio

Viola

Corelli

### 4. Allegro

Tutti

Violoncello

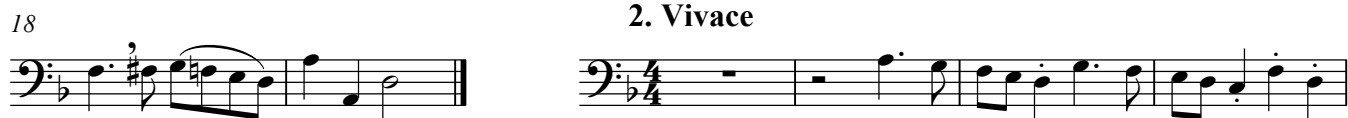
Arr. Arne Dich

# Sonate 2 da Chiesa

A. Corelli

## 1. Grave

fra Opus 1



3. Adagio

8

10

17

18

4. Allegro

26

Tutti

4

8

12

16

20 Solo A

23

Tutti

Solo A

p

31

32

2

Solo B

f

39

43

Tutti

45

51

52

2

mf





3. Adagio

Musical notation for the first staff of '3. Adagio', measures 1-8. The key signature has one flat (B-flat) and the time signature is 3/4. The notation includes various note values and rests.

Musical notation for the second staff of '3. Adagio', measures 9-17. The notation continues with various note values and rests.

Musical notation for the third staff of '3. Adagio', measures 18-28. The notation concludes with a double bar line and a repeat sign.

4. Allegro

Musical notation for the first staff of '4. Allegro', measures 1-4. The key signature has one flat (B-flat) and the time signature is 6/8. It begins with a 'Tutti' marking and a measure rest for 4 measures.

Musical notation for the second staff of '4. Allegro', measures 5-11. The notation includes various note values and rests.

Musical notation for the third staff of '4. Allegro', measures 12-18. It includes a 'Solo A' marking at measure 20.

Musical notation for the fourth staff of '4. Allegro', measures 19-25. It includes 'Tutti' and 'Solo A' markings. The dynamic marking *p* (piano) is indicated at the end of the staff.

Musical notation for the fifth staff of '4. Allegro', measures 26-32. It includes a 'Solo B' marking and a measure rest for 2 measures. The dynamic marking *f* (forte) is indicated at the beginning of the staff.

Musical notation for the sixth staff of '4. Allegro', measures 33-40. It includes a 'Tutti' marking and a measure rest for 2 measures.

Musical notation for the seventh staff of '4. Allegro', measures 41-46. The notation continues with various note values and rests.

Musical notation for the eighth staff of '4. Allegro', measures 47-52. It includes a measure rest for 2 measures. The dynamic marking *mf* (mezzo-forte) is indicated at the end of the staff.